

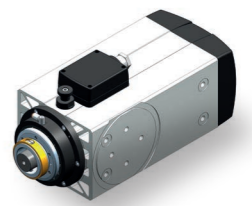
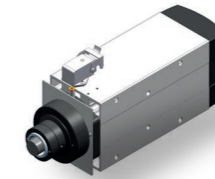
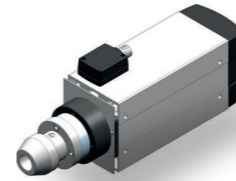
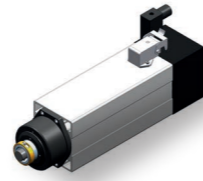
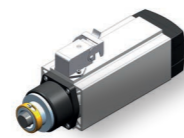
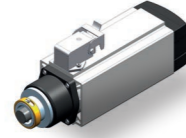
Elettromandrini Cambio Utensile Manuale  
Manual Tool Change Electrospindles

**MORE VALUE FOR YOUR MACHINE.**

**HSD**  
**MECHATRONICS**

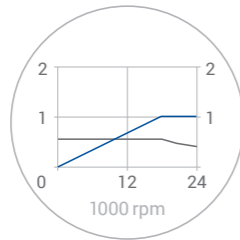


# Cambio Rapido Utensile Quick Tool Change

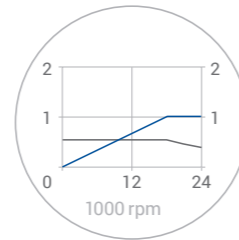


ELETTRMANDRINI MTC MTC ELECTROSPINDLES		MT-R 1055-090	MT-R 1055-090	MT-R 1073-120
Attacco <b>Taper</b>		HSK C32	HSK C32	HSK C32
Potenza S1/S6 <b>Power S1/S6</b>	kW	S1 1 S6 1,3	S1 1 S6 1,3	S1 2,1 S6 2,8
Velocità Nominale <b>Rated Speed</b>	rpm	18000	18000	18000
Velocità Massima <b>Max Speed</b>	rpm	24000	24000	18000
Tensione Nominale <b>Rated Voltage</b>	v	220	380	220
Raffreddamento <b>Cooling</b>		Shaft Driven Fan	Shaft Driven Fan	Electric Fan
Peso <b>Weight</b>	Kg	~3,5	~3,5	~8

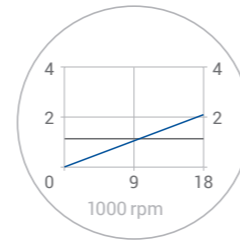
	MT-R 1090-140	MT-R 1090-140	MT-R 1120-170
Attacco <b>Taper</b>	Hydro	HSK C40	HSK C63
Potenza S1/S6 <b>Power S1/S6</b>	S1 5 S6 6	S1 6 S6 7,2	S1 5,8 S6 6
Velocità Nominale <b>Rated Speed</b>	12000	18000	6000
Velocità Massima <b>Max Speed</b>	18000	24000	6000
Tensione Nominale <b>Rated Voltage</b>	380	380	380
Raffreddamento <b>Cooling</b>	Shaft Driven Fan	Shaft Driven Fan	Shaft Driven Fan
Peso <b>Weight</b>	~12	~15	~35



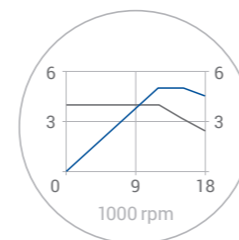
— [kW] S1  
— [Nm] S1



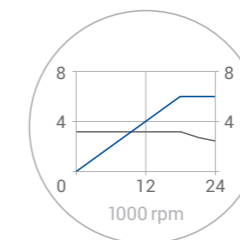
— [kW] S1  
— [Nm] S1



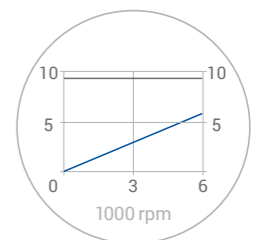
— [kW] S1  
— [Nm] S1



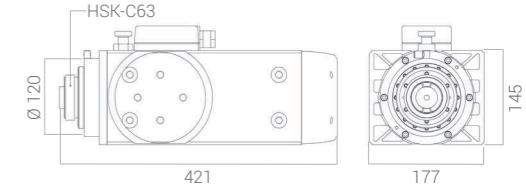
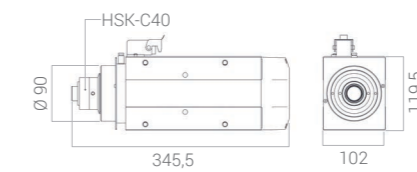
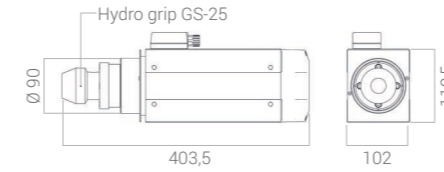
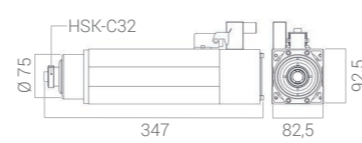
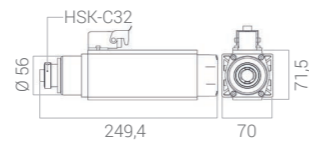
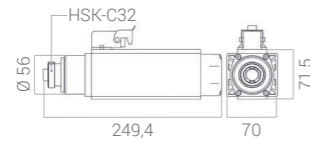
— [kW] S1  
— [Nm] S1

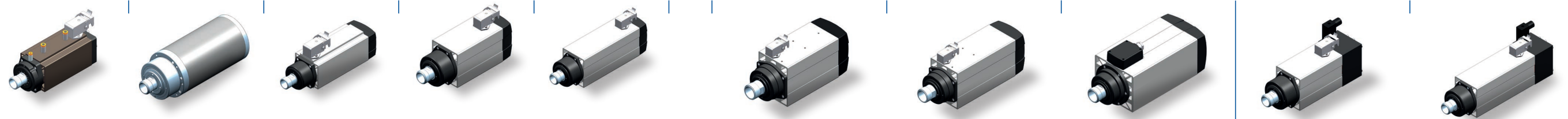


— [kW] S1  
— [Nm] S1

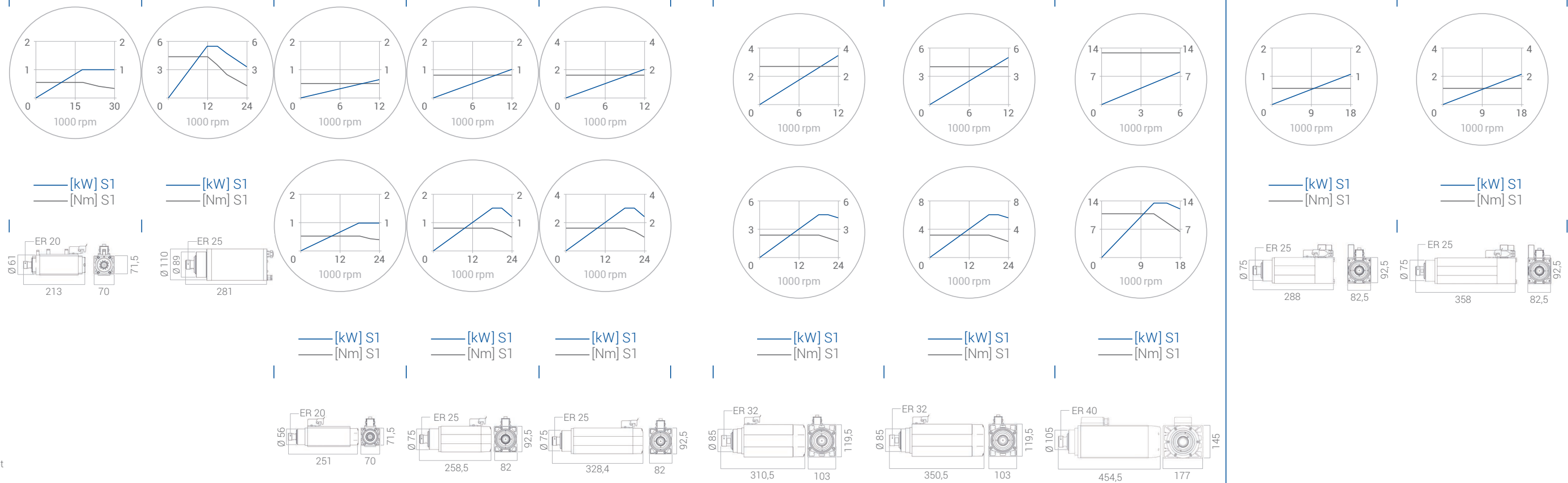


— [kW] S1  
— [Nm] S1





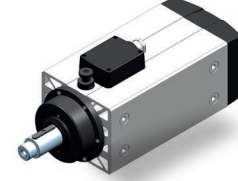
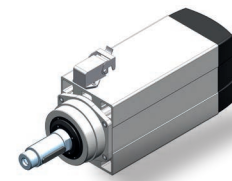
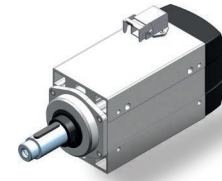
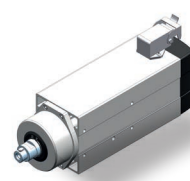
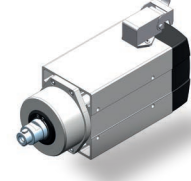
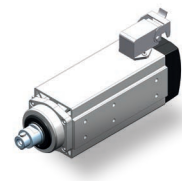
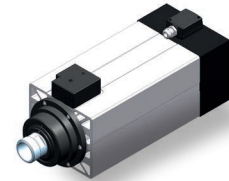
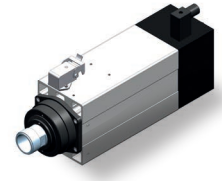
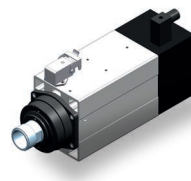
ELETTROMANDRINI MTC MTC ELECTROSPINDLES		MT-1055-090 LIQUID	ES331 LIQUID	MT1055-090	MT1073-060	MT1073-120	MT1090-100	MT1090-140	MT1120-170	MT1073-060	MT1073-120
Attacco Taper		Collet ER20	Collet ER25	ColletER20	Collet ER25	Collet ER25	Collet ER32	Collet ER32	Collet ER40	Collet ER25	Collet ER25
Potenza S1/S6 Power S1/S6	kW	S1 1 S6 1,3	S1 5,5 S6 6,6	S1 from 0,65 to 1 S6 from 0,85 to 1,3	S1 from 1 to 1,5 S6 from 1,3 to 1,8	S1 from 2 to 3 S6 from 2,4 to 3,6	S1 from 3,5 to 4,5 S6 from 4,2 to 5,4	S1 from 5 to 8,5 S6 from 6 to 7,2	S1 from 8,1 to 13,5 S6 from 9,7 to 16,2	S1 1,1 S6 1,38	S1 2,1 S6 2,8
Velocità Nominale Rated Speed	rpm	18000	12000	12000/18000	12000/18000	12000/18000	12000/18000	12000/18000	6000/12000	18000	18000
Velocità Massima Max Speed	rpm	30000	18000	12000/18000/24000	12000/18000/24000	12000/18000/24000	12000/18000/24000	12000/18000/24000	6000/12000/18000	18000/24000	18000/24000
Tensione Nominale Rated Voltage	V	220 or 380	380	220 or 220/380 or 380	220 or 380	220 or 220/380 or 380	220 or 220/380 or 380	220 or 220/380 or 380	380	220 or 380	220 or 380
Raffreddamento Cooling		Liquid	Liquid	Shaft Driven Fan	Shaft Driven Fan	Shaft Driven Fan	Shaft Driven Fan	Shaft Driven Fan	Shaft Driven Fan	Electric Fan	Electric Fan
Peso Weight	kg	~ 3,5	~ 15,5	~ 3,5	~ 7	~ 8	~ 10	~ 10	~ 35	~ 7,5	~ 8



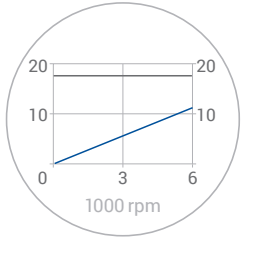
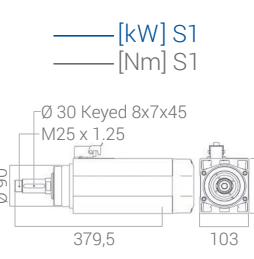
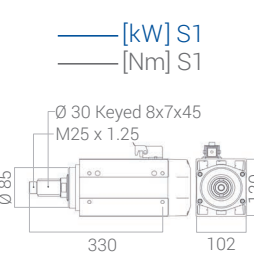
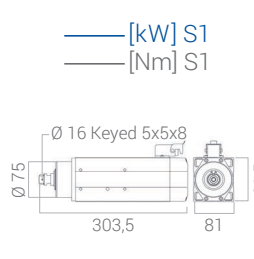
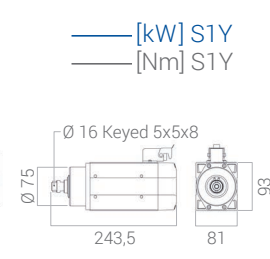
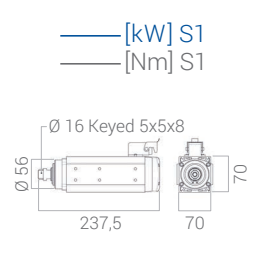
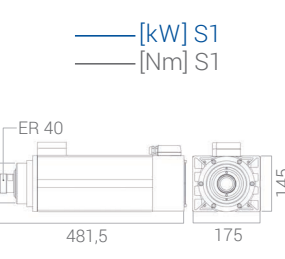
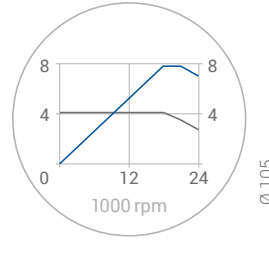
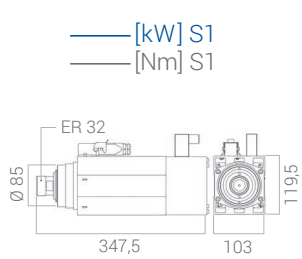
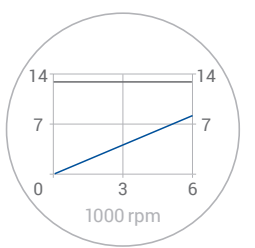
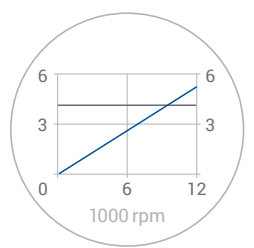
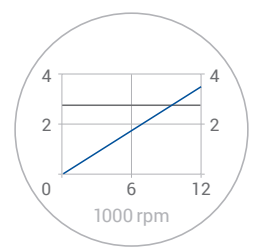
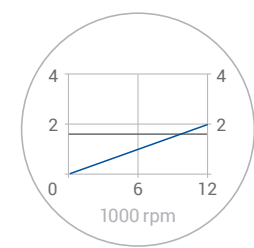
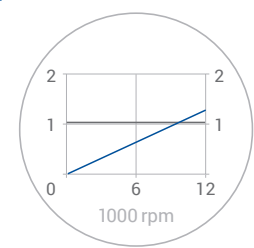
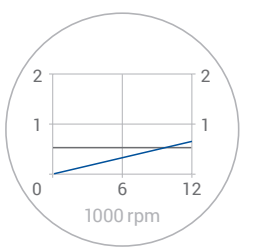
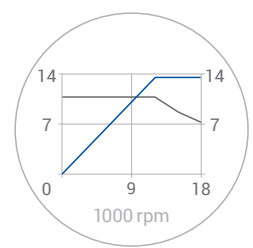
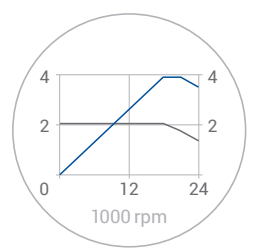
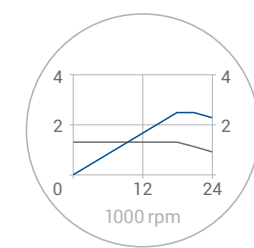
Technical data and illustrations are not binding and, for the sake of continual improvement of its products, HSD Mechatronics reserves the right to make modifications without prior notice



MTC Gamma Pinza - Ventola Calettata  
MTC Collet Range - Shaft Driven Fan



MT1090-100	MT1090-140	MT1120-170	AT1055-090	AT1073-060	AT1073-120	AT1090-100	AT1090-140	AT1120-170	
Collet ER32	Collet ER32	Collet ER40	Keyed	Keyed	Keyed	Keyed	Keyed	Keyed	ELETTROMANDRINI MTC MTC ELECTROSPINDLES
S1 2,5 S6 3,2	S1 from 3,9 to 7 S6 5,1	S1 13,5	S1 0,65 S6 0,8	S1 1,3 S6 1,5	S1 2 S6 2,4	S1 3,5 S6 4,2	S1 5 S6 6	S1 from 8,1 to 11 S6 from 9,5 to 13,5	kW Potenza S1/S6 Power S1/S6
18000	14000/18000	12000	12000	12000	12000	12000	12000	6000	rpm Velocità Nominale Rated Speed
18000/24000	18000/24000	18000	12000	12000	12000	12000	12000	6000	rpm Velocità Massima Max Speed
220 or 380	220 or 220/380 or 380	380	380	380	380	380	380	380	v Tensione Nominale Rated Voltage
Electric Fan	Electric Fan	Electric Fan	Shaft Driven Fan	Shaft Driven Fan	Shaft Driven Fan	Shaft Driven Fan	Shaft Driven Fan	Shaft Driven Fan	Raffreddamento Cooling
~ 10	~ 10	~ 35	~ 4,8	~ 4,7	~ 6,9	~ 10,4	~ 12,5	~ 35	kg Peso Weight



MTC Gamma Pinza - Elettroventola  
MTC Collet Range - Electric Fan

MTC Gamma Linguetta  
MTC Keyed Range



**AEROSPACE**  
**WINDOWS & FURNITURE**  
**CONSUMER ELECTRONICS**  
**AUTOMOTIVE**  
**HIGH TECH.**